



Changing room cabin inside astro turf football pitch (removed between 2011 and 2012)

Park changing room (metal cabin currently not in use and not accessible)

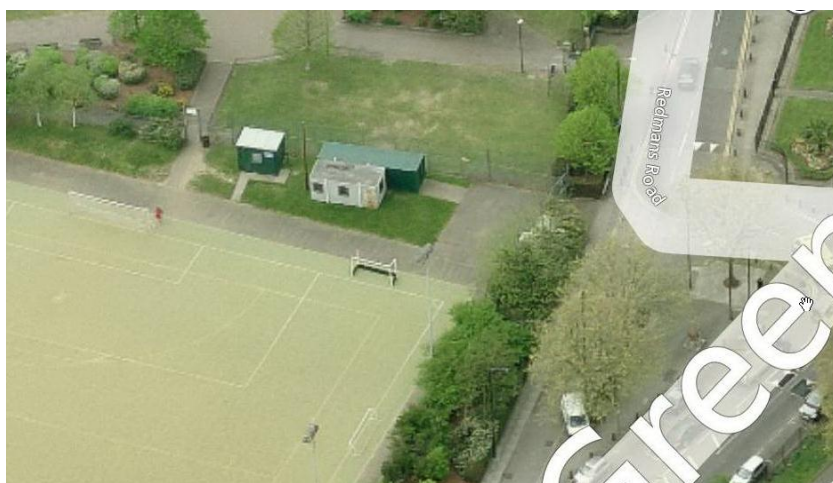
Office cabin, changing room cabin and container inside pitch

Aerial Photo of Stepney Green Park and football pitch



Inside view of the changing room cabin (photo: 2011)
approx. 2.5m x 5.7m – 14.25sqm

Changing room cabin



Aerial photos of the changing room cabin (views: east face, south face and northwest face)



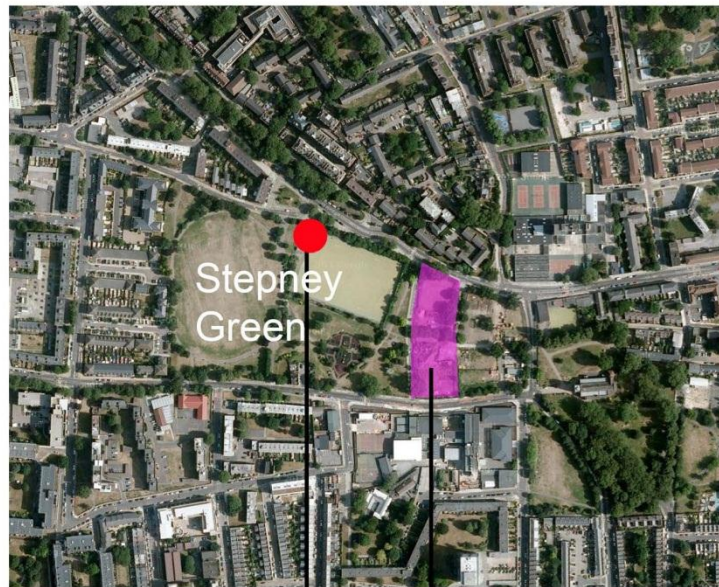
Changing room cabin
removed by LBTH / others



Office cabin (photo: Jan 2013) 2.7m x 3.6m



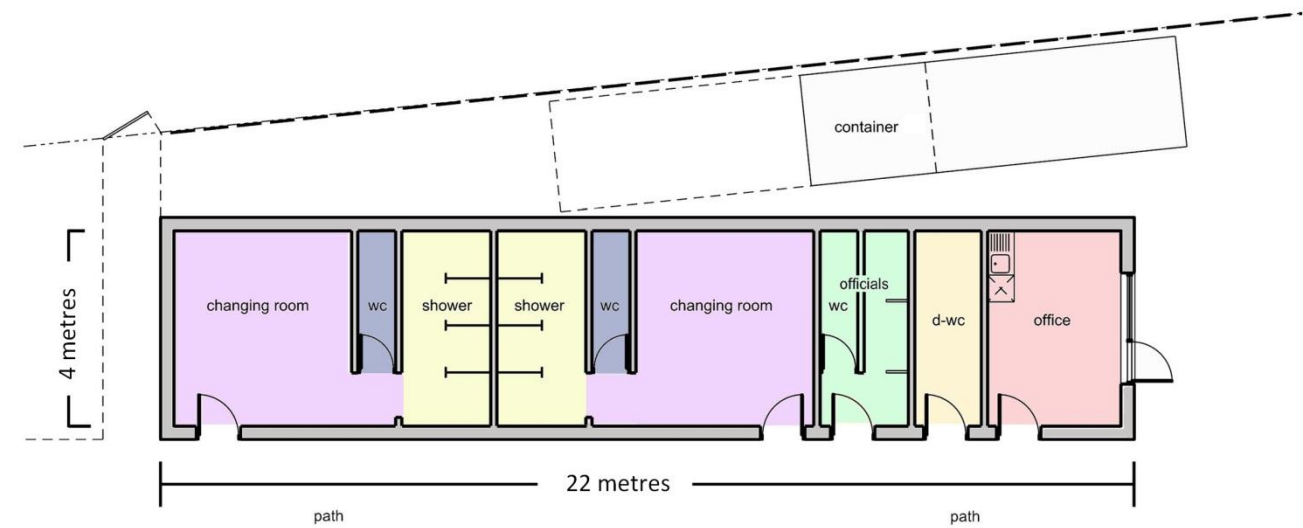
Existing site view (photo: Jan 2013) – Container currently stores football pitch lighting equipment, 2.5m x 8.5m



site of new facility



C305 Site Photos of existing shed and container



Proposed new facility: Plan

- Notes: Main building of Brick construction on reinforced concrete base
- All doors flat plate painted steel with steel framing
- All windows at high level, wired security infil glazing and metal grillage
- Orientation of the building likely to be reversed to satisfy Health and Safety requirements
- Existing container to be relocated temporarily during construction phase; to be placed afterwards at a suitable location behind the new construction.



View looking South West from pitch towards new facility



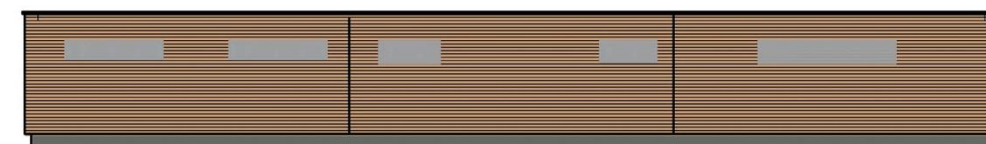
East Elevation



South Elevation



North Elevation



West Elevation

Proposed new facility: Elevations

Rev.	Date	Description	By	Chk	App	Auth

Notes		Contract: C305 - Eastern Running Tunnels	
		Originator:	
		Location: Stepney Green Football Pitch, London, E1	
		Title: Stepney Green New sports facility building	
		By:	
		Chk:	
		App:	
		Auth:	
		Scale: @ A1 Drawing and CAD file No: Sketch 1	
		Rev: 0 Suitability:	

